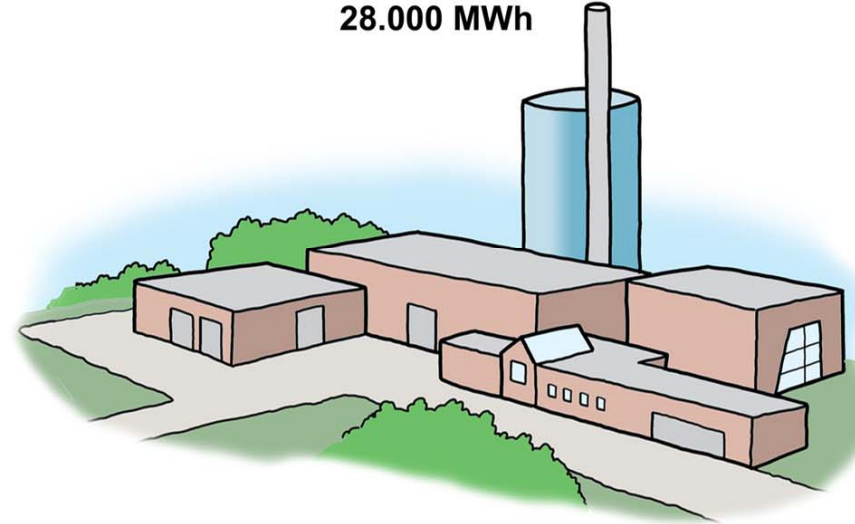


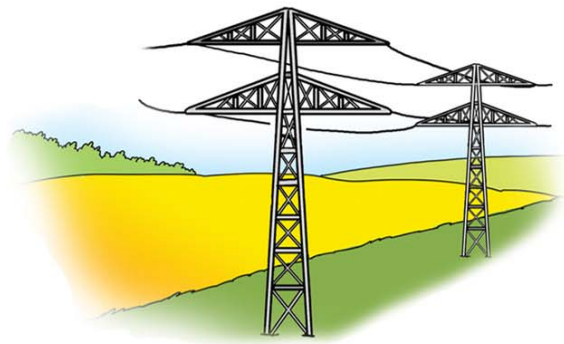
Gram Fjernvarme

District heating plant

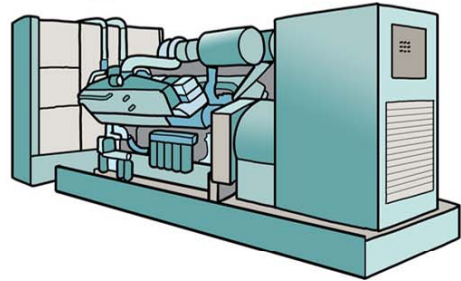
App. annual production
28.000 MWh



City

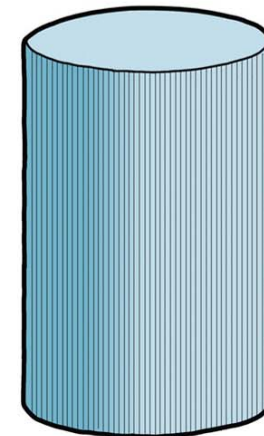


Gas engine
5,5 MW power



7 MW heat

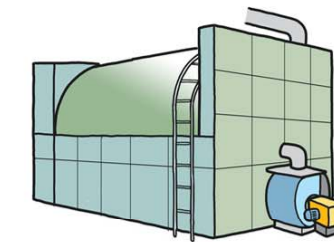
71 - 74°C



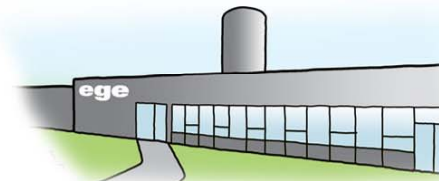
Storage tank
2300 m³

2 MW heat

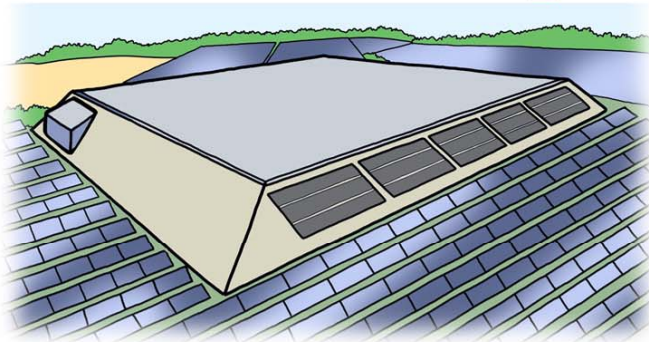
Gas boiler
5,5 MW heat



Ege Tæpper



Thermal pit storage
122.000 m³

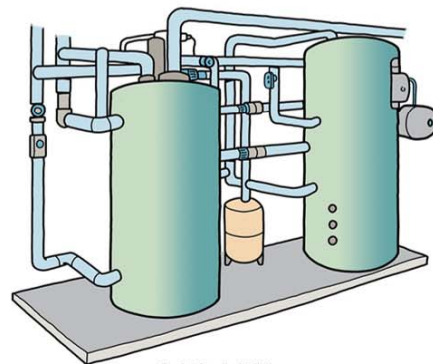


170 kW photovoltaic

Hot water

Cold water

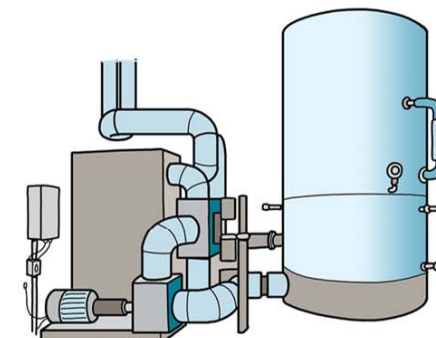
Heat pump



200 kW power
950 kW heat

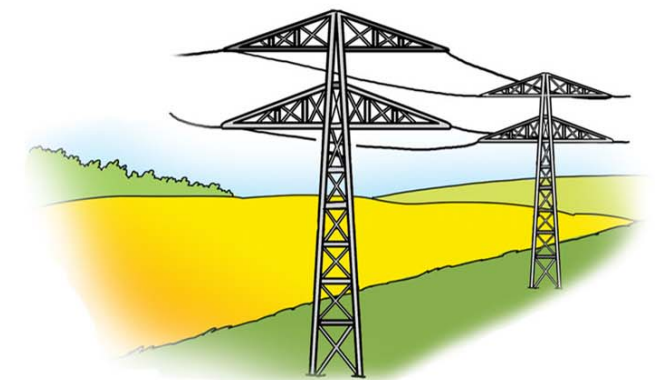
Hot water

10 MW hot water



Electric boiler

32 - 38°C



10 MW power

31 MW heat



Solar collectors
44.800 m² (3.565 qcs)